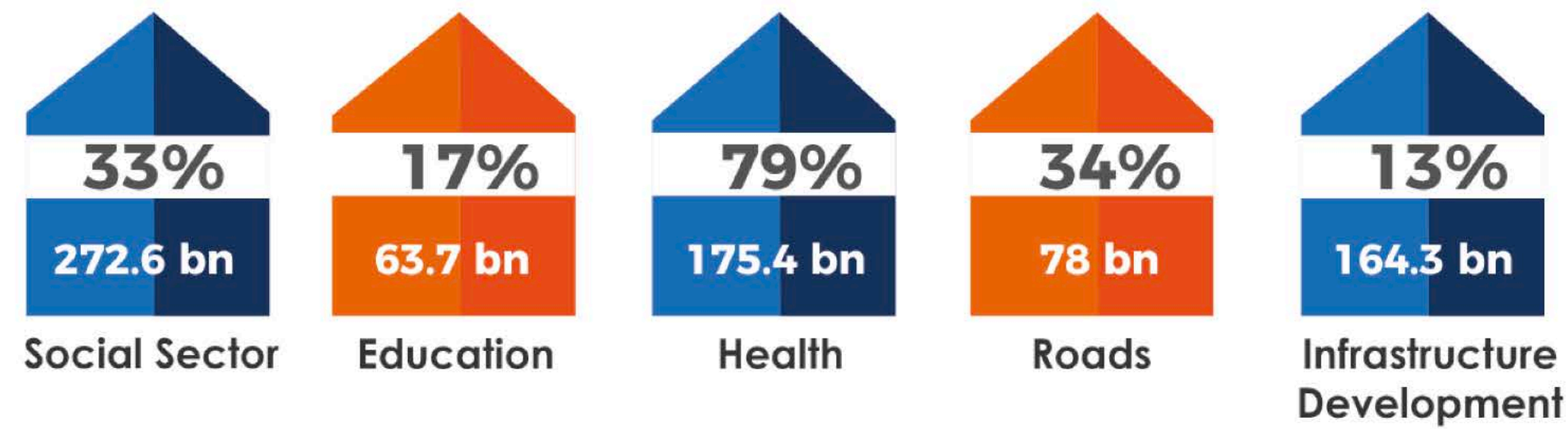


## MAJOR INCREASES IN SECTORAL ALLOCATIONS FY 2022-23



### HEALTH

**Rs. 3.1 Billion**  
Revamping of DHQ & THQ Hospitals

**Rs. 1.6 Billion**  
Integrated Reproductive Maternal New Born & Child Health

**Rs. 127 Billion**  
Universal Health Insurance Program

**Rs. 1 Billion**  
Establishment of Nursing University at PKLI

### EDUCATION

**Rs. 4.8 Billion**  
Afternoon Schools Program

**Rs. 1.5 Billion**  
Punjab Non-Formal Education

**Rs. 1 Billion**  
Retrofitting of Partially Dangerous School Buildings

**Rs. 0.5 Billion**  
Replenishment of Shelter-less Schools in Punjab

**Rs. 5.5 Billion**  
Missing Facilities & Constructions of Adcl. Classrooms

**Rs. 0.4 Billion**  
Establishment of 04 Special Education Centers

**Rs. 2.1 Billion**  
Establishment of Universities in 05 major Cities

**Rs. 1.5 Billion**  
Provision of Laptops

## SECTOR WISE ALLOCATIONS IN FY 2022-23

SOCIAL SECTORS	Education	56.7	IN RS BILLION	INFRASTRUCTURE DEVELOPMENT	Roads	80.7	IN RS BILLION
	Health & Population Welfare	174.9			Irrigation	27.6	
	Water Supply & Sanitation	11.9			Energy	5	
	Social Welfare	1.6			Public Buildings	29.5	
	Women Development	0.9			Urban Development	21.3	
	LG&CD	19					
	Sports & Youth Affairs	7.5					
PRODUCTION SECTORS	Agriculture, Livestock & Food	19.5	IN RS BILLION	SERVICES	Governance & IT	6.2	IN RS BILLION
	Forestry, Wildlife & Fisheries	6.5			Labour & HR	0.5	
	Industries, Commerce, Investment & Skills Development	12.5			Transport	6.3	
	Mines & Minerals	1.5			Emergency Services (1122)	1.8	
	Tourism	1.2					
OTHERS	Environment & Climate Change	5	IN RS BILLION	SPECIAL PROGRAMS & INITIATIVES	Special Programs & Public Partnership	154.5	IN RS BILLION
	Information, Culture & Archeology	1.2					
	Auqaf & Religious Affairs	0.6					
	Human Rights & Minority Affairs	2.5					
	Planning & Development	28					



## DEVELOPMENT PORTFOLIO 2022-23

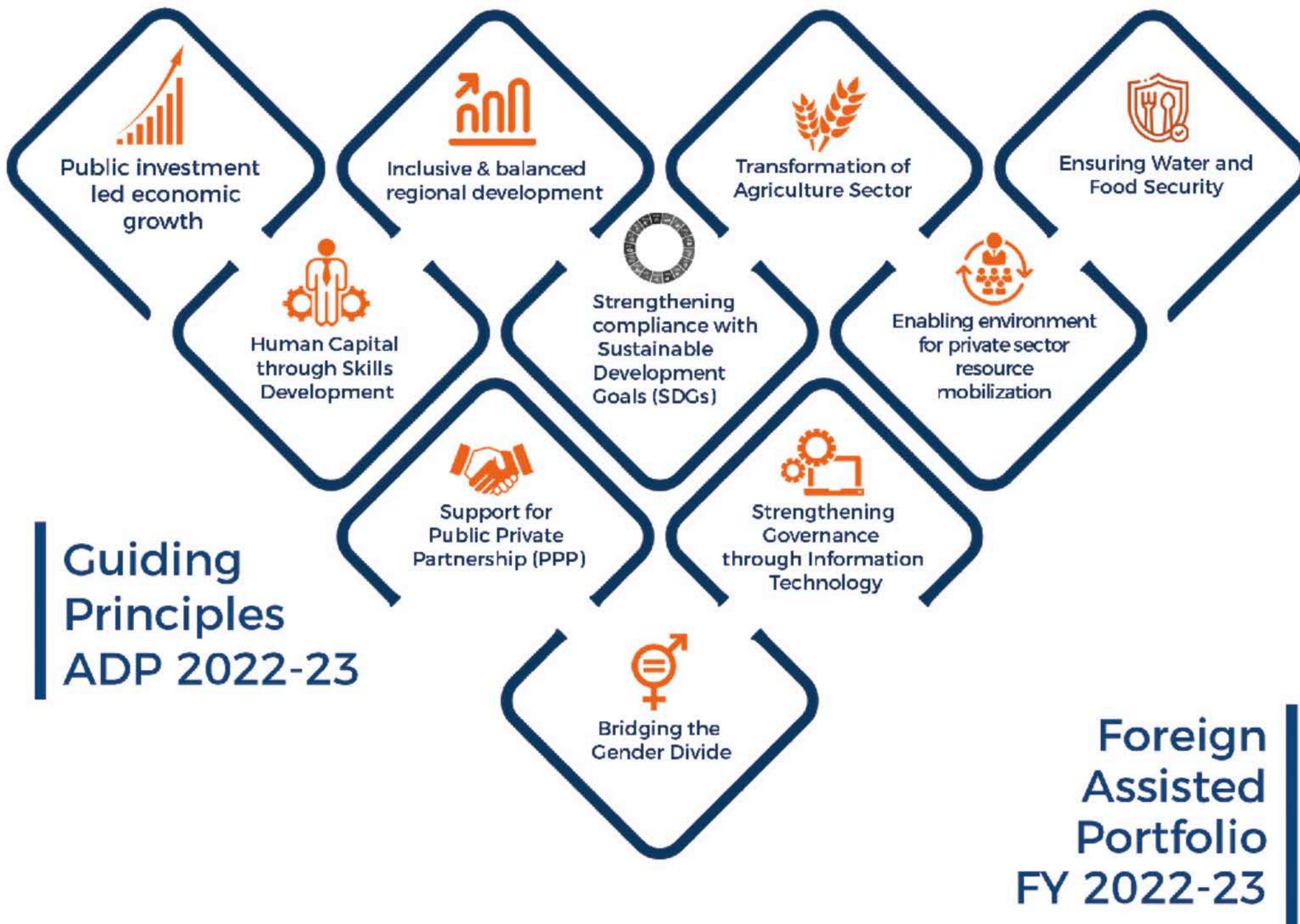
Planning & Development Board  
Government of the Punjab

IMPROVING LIVES BY PROMOTING  
INCLUSIVE AND SUSTAINABLE  
DEVELOPMENT

روشن راہیں نیا سویرا

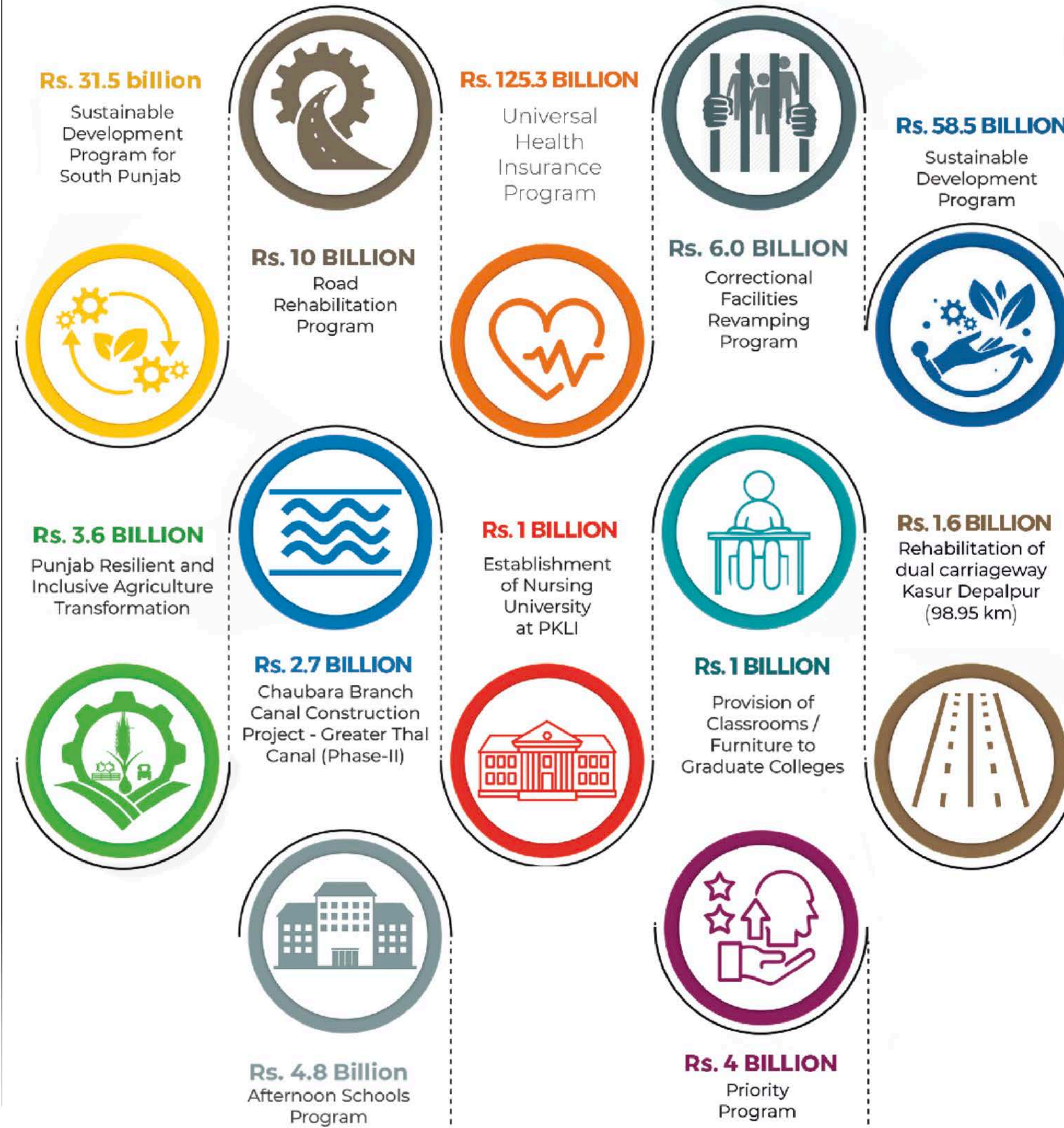


## SALIENT FEATURES OF DEVELOPMENT PORTFOLIO 2022-23



<b>JICA</b> Japan International Cooperation Agency	<b>WORLD BANK GROUP</b>	<b>ADB</b> ASIAN DEVELOPMENT BANK	<b>DANIDA</b> Danish International Development Agency	<b>AfD</b> German Development Cooperation	<b>LIFAD</b> European Union Development Cooperation Instrument	<b>AIIB</b> ASIAN INFRASTRUCTURE INVESTMENT BANK	Foreign, Commonwealth & Development Office
USD 2.603 Million	USD 243.363 Million	USD 258 Million	USD 4.59 Million	USD 15.81 Million	USD 1.83 Million	USD 4 Million	USD 15 Million

## MAJOR INITIATIVES FOR 2022-23



## SMART MONITORING OF DEVELOPMENT PROJECTS STEP TOWARDS DIGITAL PUNJAB

